

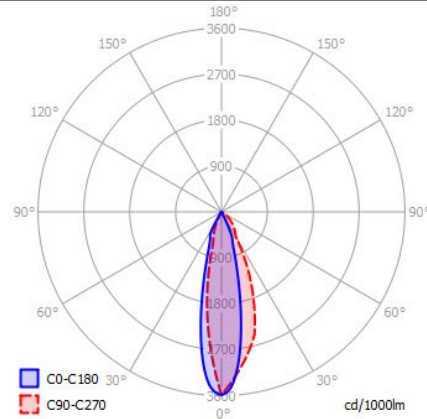
# ATLANTIS 95

## SPECIFICATIONS

MOUNTING		GROUND
POWER	[W]	7
LAMP		built-in LED
LUMINOUS FLUX*	[lm]	960
LIGHT COLOUR	[K]	3000
CRI		>90
BEAM ANGLE	[°]	30
AVERAGE LIFETIME	[h]	L80/B50.000
LUMINOUS EFFICACY	[lm/W]	137
POWER SUPPLY	[V] [A]	220-240V AC 50/60 Hz
LED-DRIVER		INCLUDED
DIMMING		PHASE DIM
THROUGH-WIRING		YES (JUNCTION BOX IV)
MATERIAL		ALUMINUM
INGRESS PROTECTION		IP68
PROTECTION CLASS		I
NET WEIGHT	[kg]	1,70
GROSS WEIGHT	[kg]	1,75
COLOUR (HOUSING)		BLACK ~RAL9005
OUTLET CABLE		2,5m H05RN-F 3x0,75mm <sup>2</sup>



## LIGHT DISTRIBUTION 30°

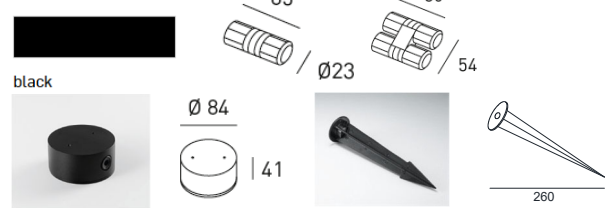


\*Luminous flux values are nominal LED data at a operating temperature of 25° C

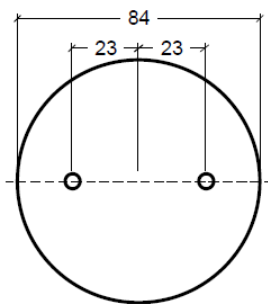
## OPTIONS / OPTIONAL ACCESSORIES

MICRO JUNCTION BOX	II	BLACK
MICRO JUNCTION BOX	IV	BLACK
GROUND SPIKE		BLACK
MOUNTING BOX		BLACK
TREE STRAP		BLACK

## Colours



## MOUNTING DIMENSIONS(WITHOUT SPIKE)



## FIXTURE DIMENSIONS

